

FOR LEASE

10856 Bayview Ave, Richmond Hill, ON



CLEARSTREAM

COMMERCIAL REAL ESTATE LTD., BROKERAGE

Michael Pearlman - Vice President - Broker

pearlmanmichael@gmail.com - C: (416) 567 5101 - O: (905) 607-0719

www.clearstreamcre.com

Site Features

10856 Bayview Ave, Richmond Hill, ON



Bayview Ave. & Elgin Mills Rd. E

- The 10830 Bayview Avenue Development is located just off of the northwest corner of Bayview and Elgin Mills.
- This new build development is anchored by an 18,000sf new format Shoppers Drug Mart, Tim Hortons, Royal Bank, medical clinic along with several strong regional and national retailers.
- With all three phases now complete, the Bayview Elgin Mills Development encompasses approximately 60,000sf of Retail/Office.
- Note that the parking fields in Phase 1, 2 and 3 are fully integrated & linked.
- Phase 3 just completed and includes an additional (approximately) 20,000sf of retail & office space.
- Royal Bank has opened in Phase 3. Loveview Learning opened in 5,400sf in Phase 3, along with eight additional tenancies that recently opened.
- In the event a unit becomes available, net rents starting at \$39.00sf plus Common Area Maintenance estimated at \$3.15sf + Property Taxes estimated at \$8.35sf.
- Second Floor Office is now fully Leased.

FULLY LEASED



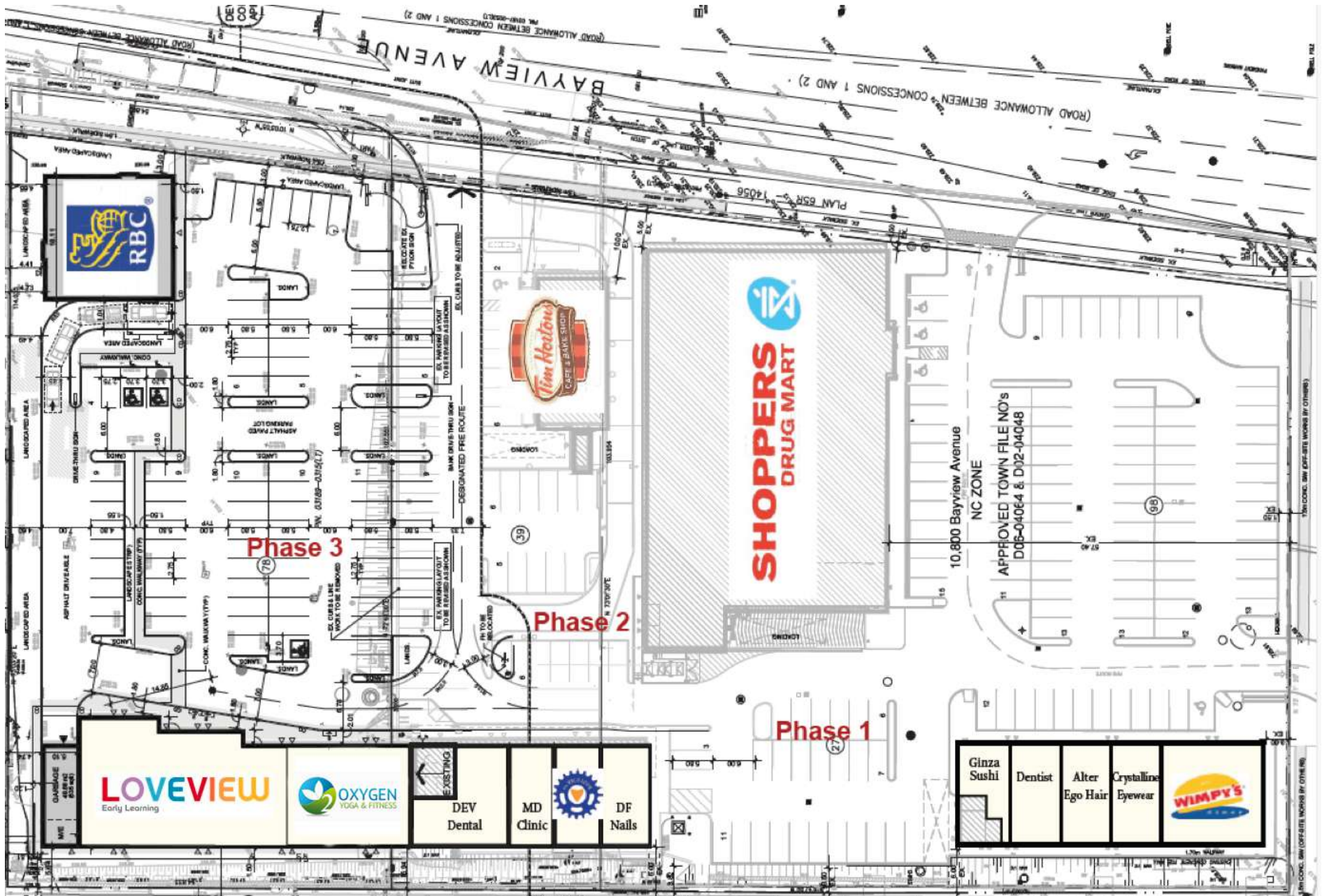
Michael Pearlman - Vice President - Broker

pearlmanmichael@gmail.com - C: (416) 567 5101 - O: (905) 607-0719

www.clearstreamcre.com

Site Plan

10856 Bavview Ave, Richmond Hill, ON



Floor Plan

10856 Bayview Ave, Richmond Hill, ON

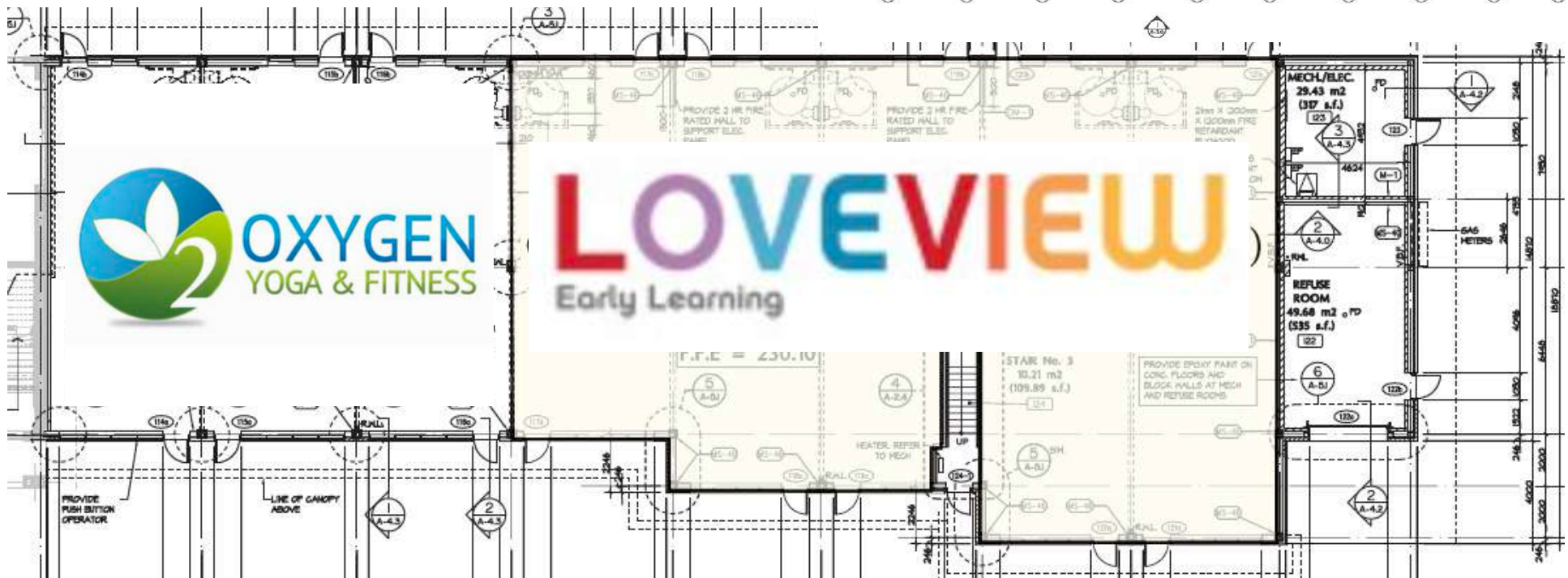
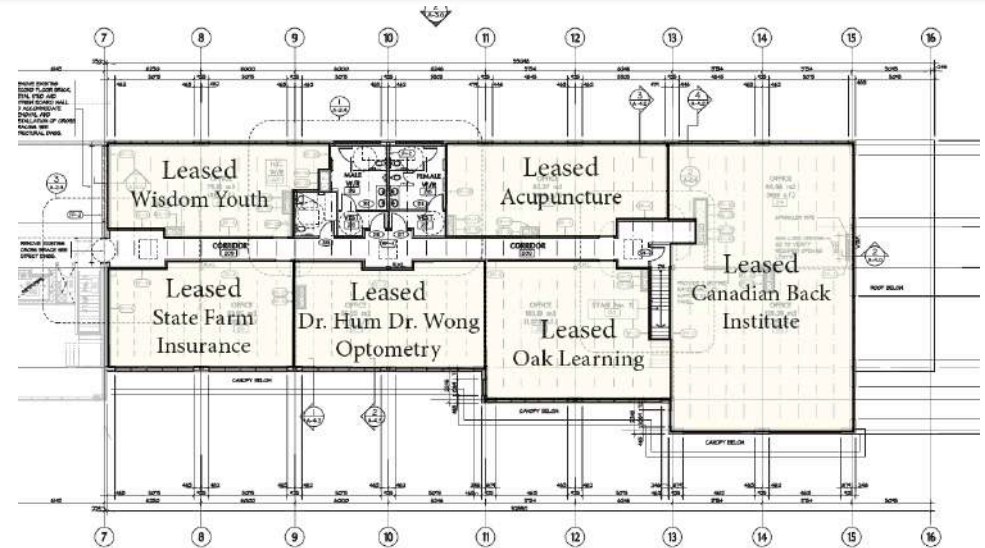
PHASE 3

GROUND FLOOR

Fully Leased

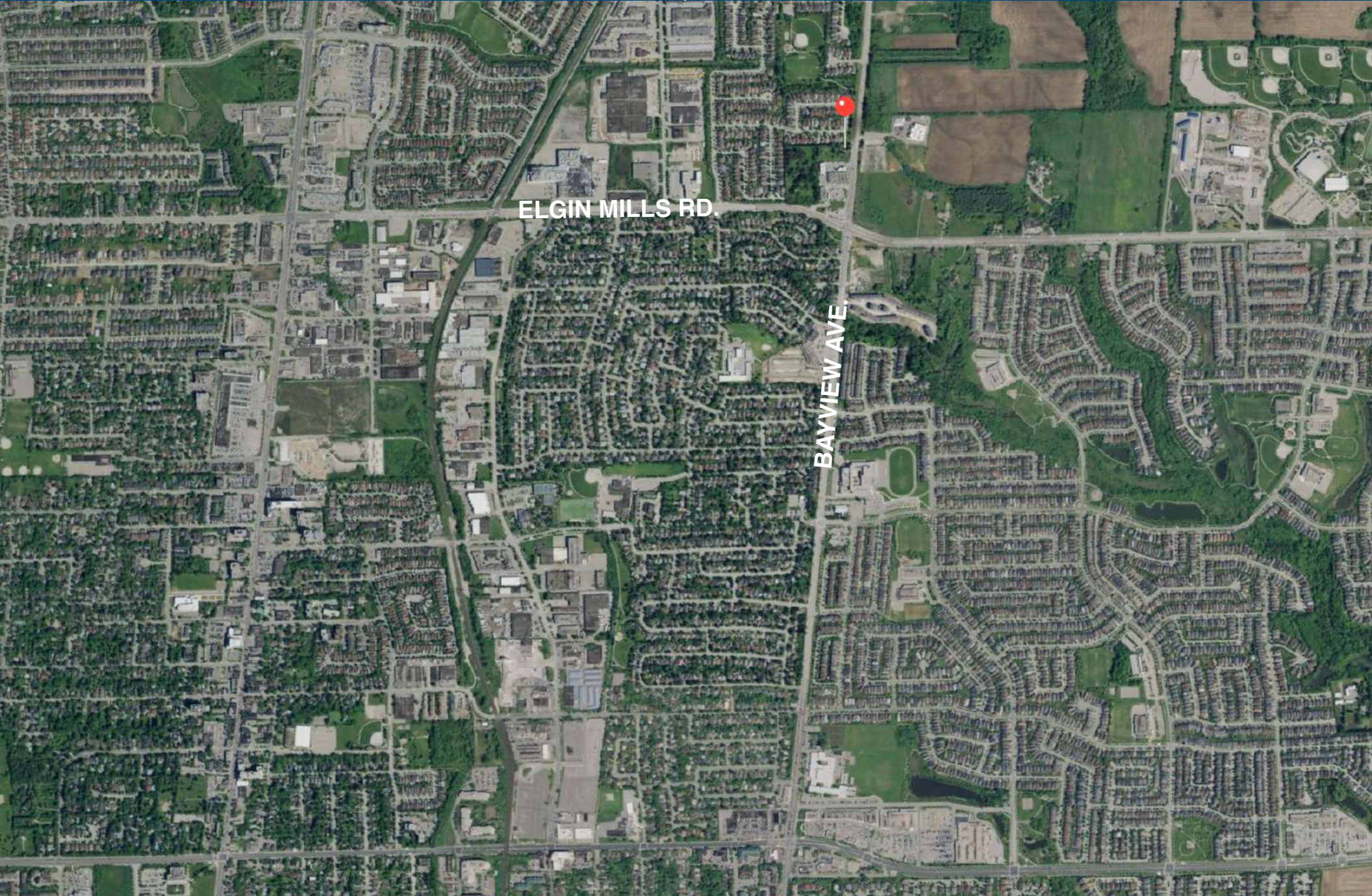
SECOND FLOOR

Fully Leased



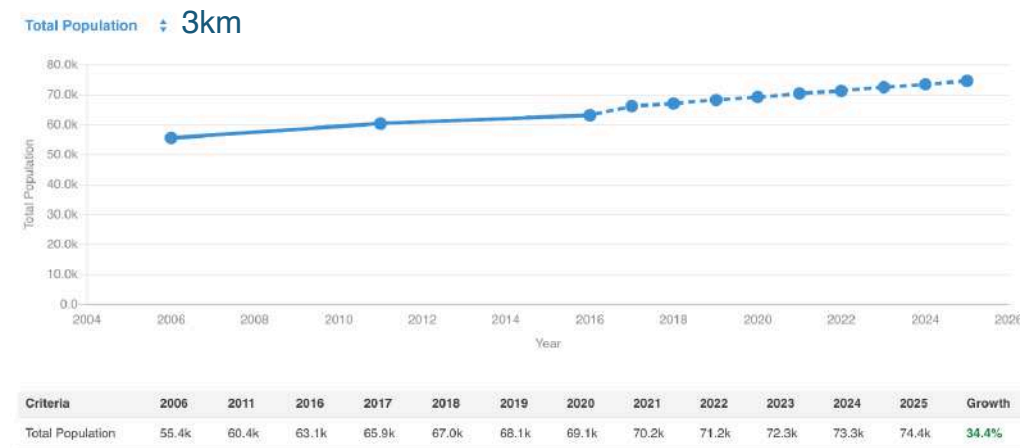
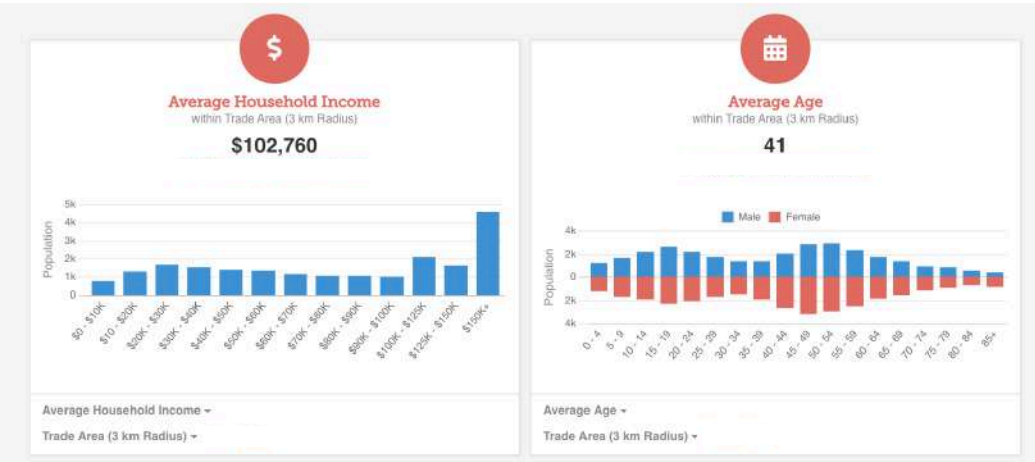
Site Overview

10856 Bayview Ave, Richmond Hill, ON



Demographics

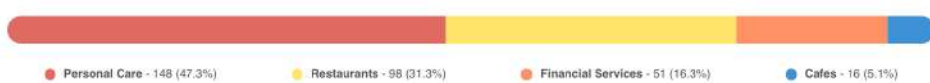
10856 Bayview Ave, Richmond Hill, ON



DEMOGRAPHIC SNAPSHOT

	3K	5K
Total Population	63,124	151,039
Households	20,630	48,805
Average Age	40.8	40.4
Average Household Income	\$102,760	\$114,063

Retail Landscape (Trade Area)



- Personal Care - 148 (47.3%)
- Restaurants - 98 (31.3%)
- Financial Services - 51 (16.3%)
- Cafes - 16 (5.1%)



Michael Pearlman - Vice President - Broker

pearlmanmichael@gmail.com - C: (416) 567 5101 - O: (905) 607-0719

www.clearstreamcre.com