

FOR LEASE

196 McEwan Dr. E., Bolton, ON



CLEARSTREAM
COMMERCIAL REAL ESTATE LTD., BROKERAGE

Dan Balkos • Sales Representative

C: (416) 571 6048 • O: (905) 607 0719 • danbalkos@gmail.com

www.clearstreamcre.com

Site Features

196 McEwan Dr. E., Bolton, ON

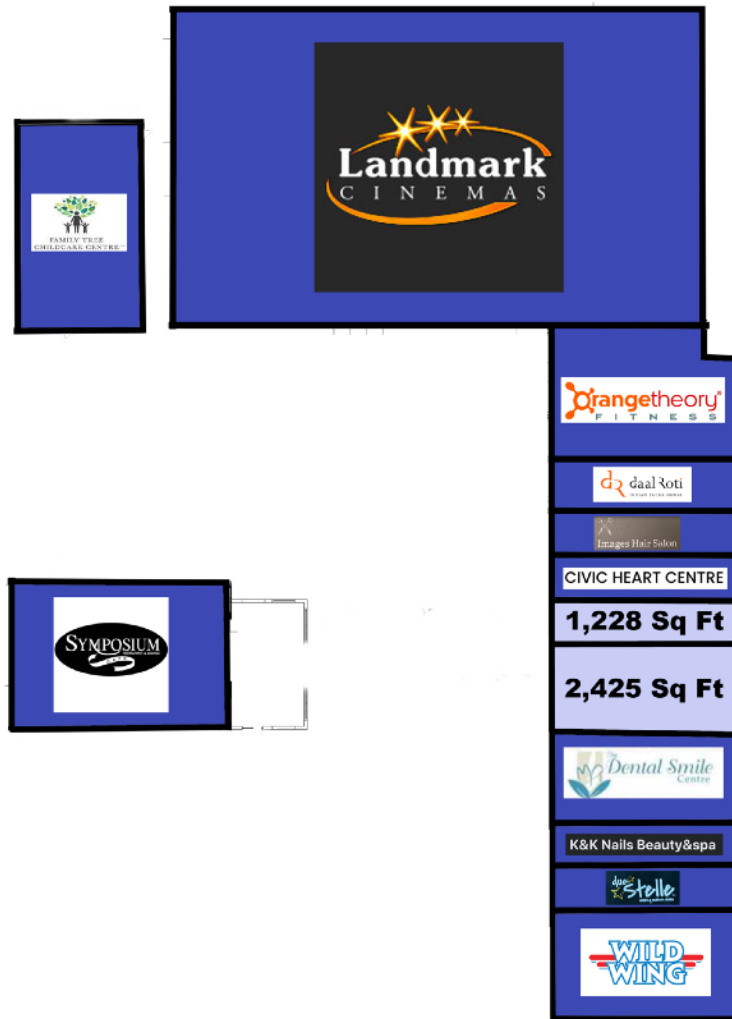


PRIME RETAIL / QSR OPPORTUNITY

- High exposure retail units available in busy plaza anchored by Landmark Cinemas.
- Units are ideal size for retail, service, and QSR uses.
- Join national co-tenants including Landmark Cinemas, Orange Theory Fitness, Symposium Cafe, and Wild Wing.
- Located in Bolton's main retail node and adjacent to Walmart.

Site Plan

196 McEwan Dr. E., Bolton, ON



TENANTS

Family Tree Child Care Centre

Landmark Cinemas

Orange Theory Fitness

Daal Roti

Images Hair Salon

Civic Heart Centre

1,228 Square Feet Available

2,425 Square Feet Available

The Dental Smile

K&K Nails Beauty & Spa

Due Stelle

Wild Wing

Symposium Cafe

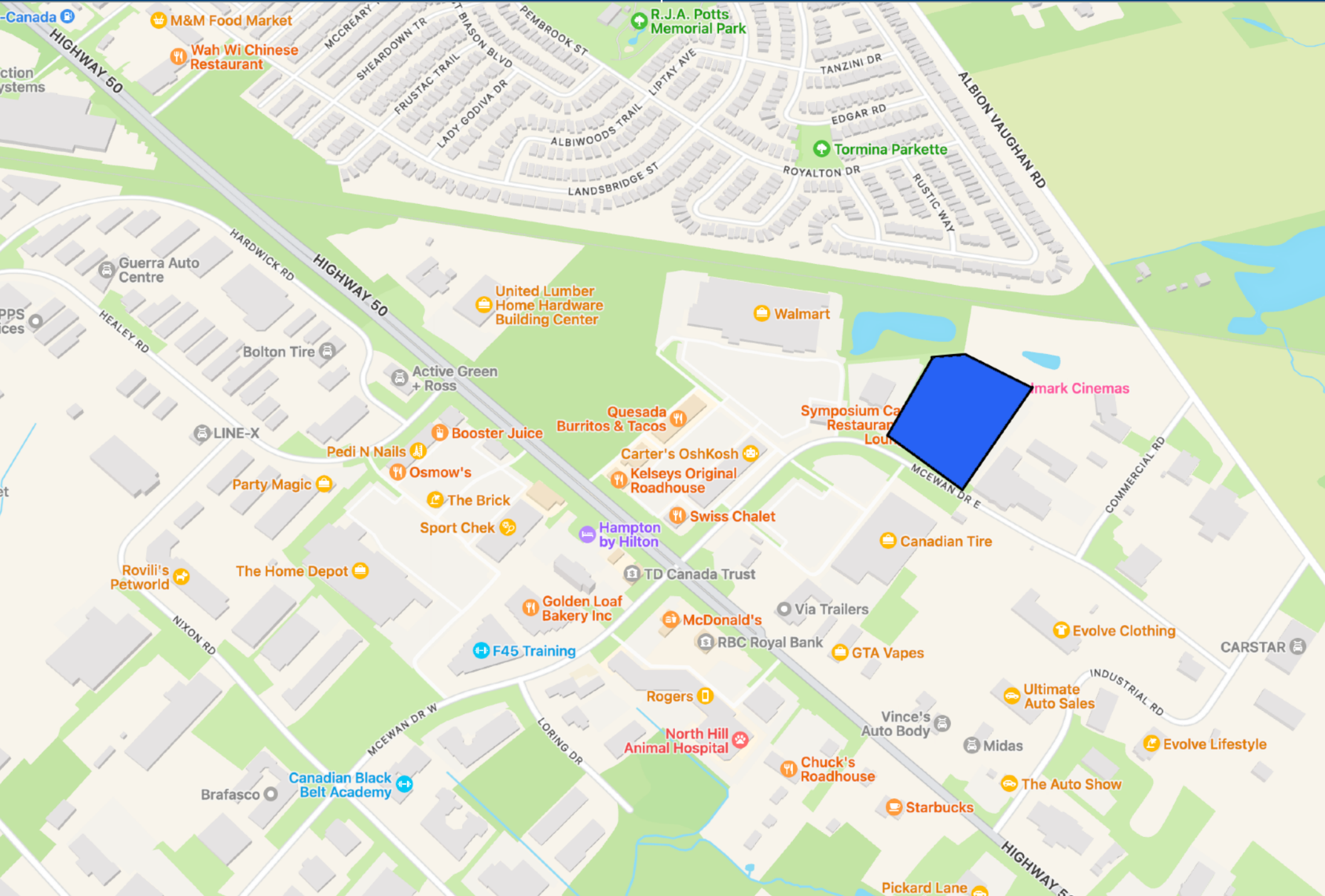
**AVAILABLE
UNITS:**

Unit 9 - 1,228 Sq. Ft.

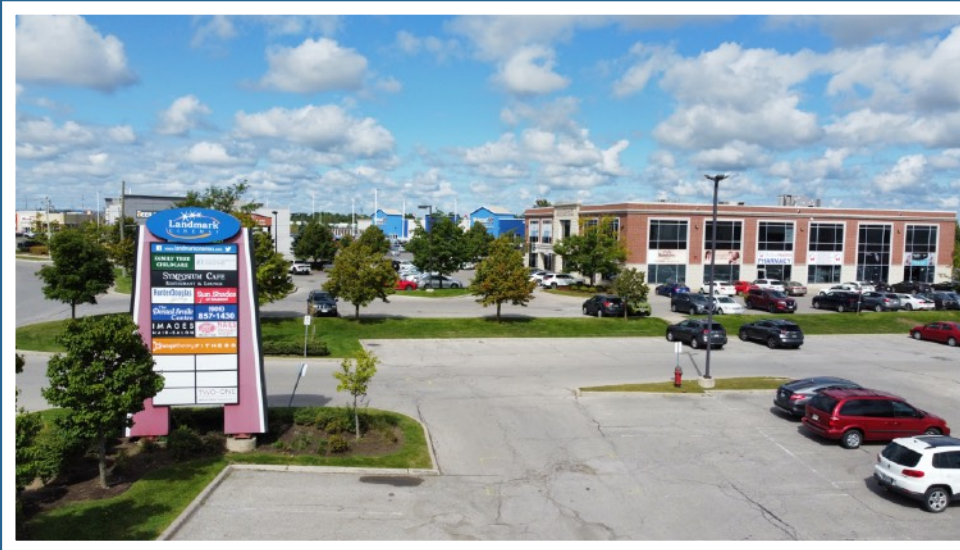
Unit 7/8: 2,425 Sq. Ft.

Location Overview

196 McEwan Dr. E., Bolton, ON



196 McEwan Dr. E., Bolton, ON



DISCLAIMER

No warranty or representation, express or implied, is made to the accuracy or completeness of the information contained herein, and same is submitted subject to errors, omissions, change of price, rental or other conditions, withdrawal without notice, and to any special listing conditions imposed by the property owner(s). As applicable, we make no representation as to the condition of the property (or properties) in question.